



Webbs  
Helping people move since 1994

Nursery Road | Walsall | WS3 2DU

Offers Over £180,000





## Summary

**\*\*THREE BEDROOM HOME\*\*POPULAR LOCATION\*\*NO ONWARD CHAIN\*\*REFITTED BATHROOM\*\*THREE GENEROUS BEDROOMS\*\*POTENTIAL TO EXTENDED STPP\*\*PERFECT FIRST TIME BUY OR INVESTMENT\*\* VIEWING ESSENTIAL\*\***

Nestled on Nursery Road in Walsall, this improved three-bedroom semi-detached house presents an excellent opportunity for first-time buyers and investors alike. The property is ideally located within close proximity to local amenities, including shops, schools, and transport links, making it a convenient choice for families and commuters.

Upon entering, you are welcomed by a mature front garden that leads to a charming entrance hall. The ground floor features a spacious lounge, perfect for relaxation and entertaining, alongside a fitted kitchen that offers practicality for everyday living.

As you ascend to the first floor, you will find three generous bedrooms, providing ample space for family or guests. The refitted bathroom is modern and well-appointed, ensuring comfort and convenience.

The rear garden is a true highlight of this property, being both private and enclosed, making it an ideal space for outdoor activities or simply enjoying a quiet moment in nature. There is also potential

## Key Features

- NO UPWARD CHAIN
- LIVING ROOM
- SEPERATE WC
- FAMILY BATHROOM
- IDEAL UPGRADE PROJECT
- ENTRANCE LOBBY
- KITCHEN / DINER
- 3 BEDROOMS
- GARDENS
- EARLY VIEWING ADVISED

## Rooms and Dimensions

### ENTRANCE HALL

### LIVING ROOM

12'11" x 13'6" (3.95 x 4.13)

### KITCHEN / DINER

12'11" x 13'6" (3.95 x 4.13)

### WC

### FIRST FLOOR LANDING

### BEDROOM ONE

10'8" x 10'0" (3.27 x 3.06)

### BEDROOM TWO

7'10" x 11'0" (2.41 x 3.36)

### BEDROOM THREE

7'8" x 8'9" (2.35 x 2.68)

### FAMILY BATHROOM

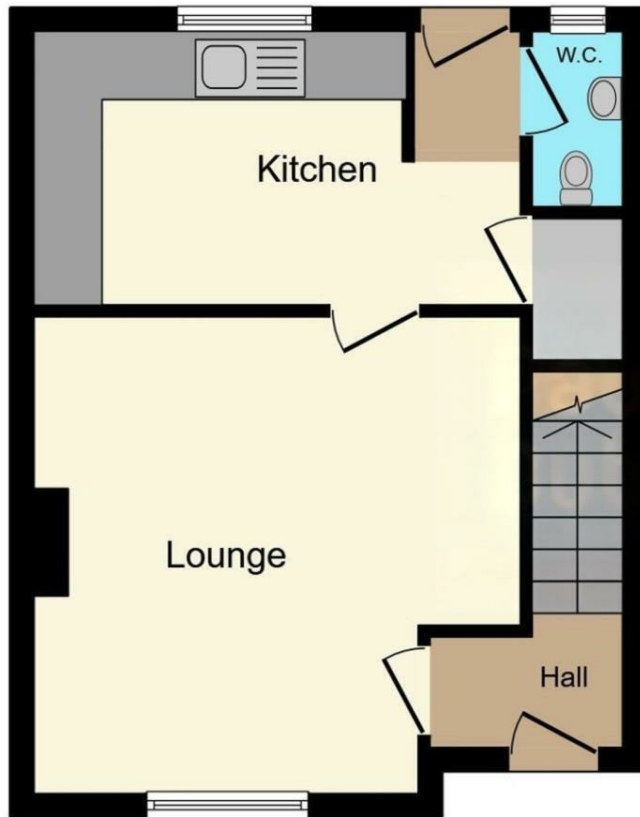
5'8" x 8'0" (1.74 x 2.44)

### OUTSIDE

### Identification Checks B







**Ground Floor**



**First Floor**

This floor plan is for illustrative purposes only. It is not drawn to scale. Any measurements, floor areas (including any total floor area), openings and orientation are approximate. No details are guaranteed, they cannot be relied upon for any purpose and they do not form part of any agreement. No liability is taken for any error, omission or misstatement. A party must rely upon its own inspection(s). Powered by [www.focalagent.com](http://www.focalagent.com)

Webbs Estate Agents - endeavour to maintain accurate depictions of properties in Virtual Tours, Floor Plans and descriptions, however, these are intended only as a guide and purchasers must satisfy themselves by personal inspection.

